

Transforming our Communities

Step up / Step down beds

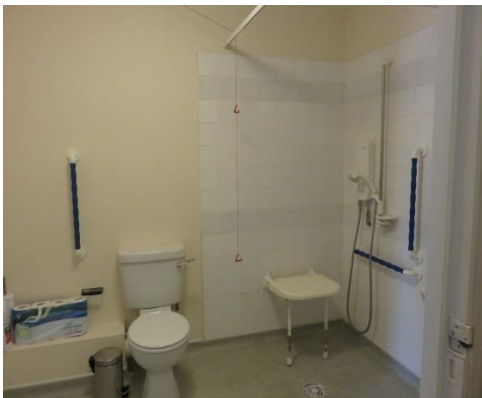


What are step up / step down beds?

One way that we can aim to make sure people receive the right care, at the right time, in the right place, and by the right professionals is through the use of 'Step up/ Step down beds' These are short stay beds available for up to 6 weeks within specifically selected Extra Care Housing Facilities, our aim is for these to be available across Hambleton, Richmondshire and Whitby

Sycamore Hall Facility

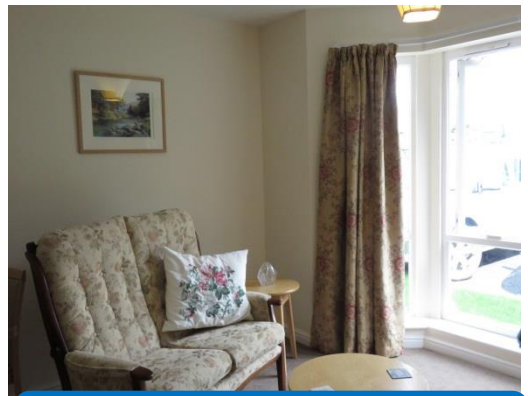
Bathroom



Personal Kitchen



Outside / Garden Space



Personal Lounge

The Step up / Step down bed model will deliver the following objectives:

- Care closer to home delivered in local communities
- Support individuals to maximise their potential and to remain as independent as possible through rehabilitation
- Avoid prolonged stays in hospital



What will I receive when I get there?

Staff within the Extra Care Facility will work alongside our local integrated health and social care team, such as physiotherapist, nurses and GPs to ensure your care and support needs are met; they will help with your mobility and work with you in such a way as to promote your independence. They will support you to regain or maintain your skills in undertaking everyday tasks for example making a cup of tea or managing with personal care.

